

Le Nouveau Chef. Suits you.

Dressing yourself in the kitchen is nowadays surely as important as dressing dishes. As leading brand in luxurious kitchen- and service wear, Le Nouveau Chef wants to make sure your look is as perfect as the menu you're aiming for. All ingredients must fit.

PASSIONATE

The same passion you'll find in a top chef's kitchen is also found in all our designs and products. Our mission is clear: we would like to give entrepreneurs and staff in the hotel-, restaurant- and catering industry the opportunity to excel by providing them the highest quality clothing possible.

PERSONAL

Our family-owned company, established in 1986, has grown to become one of the largest brands in the industry with customers from all over the world. Throughout the years, personal attention for our clients has been consistent and our aim is to build long lasting relationships.

FASHIONABLE

Tough cut with a great fit. Classy and comfortable. Exceptional quality with an eye for sustainability. Combining fashion with functionality, Le Nouveau Chef designs fashionable and innovative servicewear and chef jackets with a perfect fit. Suits for staff. **H**





JULIEN white
SYDNEY washed grey denim

CONTENT

- 7** Chef Jackets - men
- 37** Chef Jackets - women
- 51** (Bib) Aprons - kitchen
- 69** Pants
- 79** Service Wear
- 93** Hats & Other
- 102** Green Choice
- 104** Product Index
- 118** Partners



Chef Jackets



Our chef jackets are designed for fashionable chefs who value high quality clothing. The designs are original and are made with a keen eye for detail, maximum comfort and durability.

MEN

NEW



FALCO white



GREEN CHOICE

**FALCO**

White
Art. 10.1250
XS-4XL

**COLOURS**

White

Fabrics:
100% CO Bluesign



GREEN CHOICE

ANGELO

Patriot Blue
Art. 10.2002
XXS-6XL



COLOURS



Fabrics:
50%PE/50%Tencel
55%CO/45% 2nd Life Polyester



Patriot
Blue
Fabrics:
50%PE/50%CO Cooltex
55%CO/45% 2nd Life Polyester



Polo Piqué stretch
on the back



POLO-PIQUÉ

The back panel (and in some cases also the sleeves) of these items are made of an innovative sustainable polo-piqué fabric. This sustainable fabric contains 55% Bio-cotton and 45% Polyester derived from recycled PET bottles. The stretch in this fabric provides excellent freedom of movement.



We also created a female version of Gusto and named her **Venus**.
Check it out on page 39.



GUSTO

Black
Art. 10.2004
3XS-6XL
M - 6XL (plus size fit)



COLOURS



White Black

Fabrics:
50%PE/50%CO Cooltex



GUSTO white



GREEN CHOICE



Polo Piqué stretch
on the back



Take a look at the product index for images of various colours

Our **Ladies Jacket Elise** is
the perfect match for Alain.
You'll find Elise on page 40.

ALAIN

Patriot Blue
Art. 10.2006
XXS-4XL



COLOURS



Fabrics:
50%PE/50%Tencel
55%CO/45% 2nd Life Polyester



Fabrics:
50%PE/50%CO Cooltex
55%CO/45% 2nd Life Polyester

GREEN CHOICE



Polo Piqué stretch
on the back



Take a look at the product index for images of various colours

Our **Ladies Jacket Esmee** is
the perfect match for Fabian.
You'll find Esmee on page 38.

FABIAN

Black
Art. 10.2003
XXS-4XL



COLOURS



Fabrics:
50%PE/50%Tencel
55%CO/45% 2nd Life Polyester



DAVE white

Our **Ladies Jacket Lynn** is
the perfect match for Dave.
You'll find Lynn on page 42.

NEW

DAVE

Navy
Art. 10.1184
5XS-6XL



COLOURS



White



Black



Navy



Olivette

Fabrics:

65%PE/35%CO Xtraflex



Hidden pocket
inside



Take a look at the product index for images of various colours

NEW



ANDREAS

Black
Art. 10.2201
XXS-4XL



COLOURS



Fabrics:
67%PE/33%CO
55%CO/45% 2nd Life Polyester

Texture:
Herringbone texture

GREEN CHOICE



Herringbone texture front



Polo Piqué stretch
on the back

Andreas could be combined
perfectly with **Apron Davos**.
You'll find Davos on page 62.



HERRINGBONE

Herringbone, a weave in V-pattern, is a very dense weave and therefore exceptionally strong and durable. Due to the high thread density, this luxurious fabric fits perfectly and has a slight shine to it. Because this fabric is somewhat stiffer, it does not wrinkle quickly, so it can be seen as an easy-care product.





GREEN CHOICE



Herringbone texture front
(black & white only)

Polo Piqué stretch
on the back



Take a look at the product index for images of various colours

Julien has a twin sister,
Ladies Jacket Jolie.
You'll find Jolie on page 41.

JULIEN

White
Art. 10.8003
XXS-4XL



COLOURS



White Black

Fabrics:
67%PE/33%CO
55%CO/45% 2nd Life Polyester
Texture:
Herringbone texture
(black & white only)



Patriot Blue Pearl Grey Olivette

Fabrics:
50%PE/50%CO Cooltex
55%CO/45% 2nd Life Polyester



JULIEN black



GREEN CHOICE

YVES

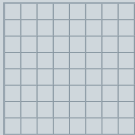
Black
Art. 10.2102
XS-4XL



COLOURS



Fabrics:
50%PE/50%CO
55%CO/45% 2nd Life Polyester



Waffled texture front



Yves finds his match in our
Ladies Jacket Sophie.
You'll find Sophie on page 44.



PITCHER

White
Art. 10.9003
XXS-4XL



COLOURS



Fabrics:
65%PE/35%CO Xtraflex



GREEN CHOICE

Ferre finds his match in **Ladies Jacket Fae**. You'll find Fae on page 46.

FERRE

White
Art. 10.8001
3XS-6XL



COLOURS



Fabrics:
50%PE/50% Cooltex
55%CO/45% 2nd Life Polyester



Polo Piqué stretch
on the back



Take a look at the product index for images of various colours



FERRE pearl grey
FERRE patriot blue



JORDY black
CHICAGO black denim

GREEN CHOICE



Polo Piqué stretch
on the back

JORDY

White
Art. 10.8002
XXS-4XL



COLOURS



Fabrics:
50%PE/50%Tencel
55%CO/45% 2nd Life Polyester



NEW

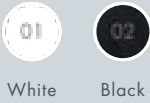


NERO

Black
Art. 10.6001
XXS-6XL



COLOURS



Fabrics:
65%PE/35%CO Xtraflex



Take a look at the product index for images of various colours



CHAVI

Sturdy Denim
Art. 10.1200
XS-XL



COLOURS



Fabrics:
100%CO





TEXAS

White
Art. 10.5003
XXS-4XL



COLOURS



White

Fabrics:
65%PE/35%CO Xtraflex



Take a look at the product index for images of various colours

You'll find matching **Ladies Jacket Milou** on page 48.



LOUIS

Black
Art. 10.5002
XXS-4XL



COLOURS



White



Black

Fabrics:
65%PE/35%CO Xtraflex



Black
Denim

Fabrics:
52%CO Fairtrade/45%PE/3%EOL

GREEN CHOICE



Take a look at the product index for images of various colours



MORGAN white
CHICAGO sand denim

Morgan could be combined perfectly with **Apron Jackson**.

You'll find Jackson on page 65.



Hidden pocket inside



Take a look at the product index for images of various colours

MORGAN

Black
Art. 10.2501
XXS-4XL



COLOURS



White Black Navy

Fabrics:
65%PE/35%CO Xtraflex



Chef Jackets



Our women's chef jackets are especially designed for lady chefs who value fashion and functionality. Our designs are perfect for females and are made with a keen eye for detail, maximum comfort and durability.

WOMEN

GREEN CHOICE



Polo Piqué stretch
on the back

ESMEE

White
Art. 10.2013
3XS – 4XL



COLOURS



Fabrics:
50%PE/50%Tencel
55%CO/45% 2nd Life Polyester

Our **Chef Jacket Fabian** is
the perfect match for Esmee.
You'll find Fabian on page 15.

Take a look at the product index for images of various colours

We also created a male
version of Venus and named
him **Gusto**. You'll find Gusto
on page 12.



VENUS

Black
Art. 10.2014
3XS-6XL



COLOURS



Fabrics:
50%PE/50%CO Cooltex



Take a look at the product index for images of various colours

GREEN CHOICE

Our **Men's Jacket Alain** is
a perfect match for Elise.
You'll find Alain on page 14.

ELISE

Black
Art. 10.2016
XXS-4XL



COLOURS



White Black

Fabrics:
50%PE/50%Tencel
55%CO/45% 2nd Life Polyester



Patriot Blue Pearl Grey

Fabrics:
50%PE/50%CO Cooltex
55%CO/45% 2nd Life Polyester



Polo Piqué stretch
on the back



Take a look at the product index for images of various colours

GREEN CHOICE



Herringbone texture front
(black & white only)

Polo Piqué stretch
on the back



Take a look at the product index for images of various colours

JOLIE

Patriot Blue
Art. 10.8013
XS-4XL



COLOURS



White Black

Fabrics:
67%PE/33%CO
55%CO/45% 2nd Life Polyester

Texture:
Herringbone texture
(black & white only)



Patriot Blue *Olivette

Fabrics:
50%PE/50%CO Cooltex
55%CO/45% 2nd Life Polyester
*Olivette: m.o.q. 30 pieces

Jolie has a match
with **Chef Jacket Julien**.
Check it out on page 22.

Lynn finds her match in **Chef Jacket Dave**. You'll find Dave on page 17.

LYNN

Olivette
Art. 10.1154
3XS - 6XL



COLOURS



White



Black



Navy



Olivette

Fabrics:
65%PE/35%CO Xtraflex



Hidden pocket inside



Take a look at the product index for images of various colours



LYNN black
OREGON black

GREEN CHOICE

SOPHIE

Black
Art. 10.2112
XXS-4XL



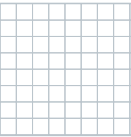
COLOURS



Fabrics:
50%PE/50%CO
55%CO/45% 2nd Life Polyester



Polo Piqué stretch
on the back



Waffled texture front



Sophie finds her match in our
Chef Jacket Yves.
You'll find Yves on page 24.



SOPHIE white

GREEN CHOICE

FAE

Patriot Blue
Art. 10.8011
XXS-4XL



COLOURS



White



Black



Patriot
Blue



Pearl
Grey*

Fabrics:

50%PE/50%CO Cooltex
55%CO/45% 2nd Life Polyester

* Pearl Grey: m.o.q. 30 pieces



Polo Piqué stretch
on the back



Fae finds her match in
Chef Jacket Ferre.
You'll find Ferre on page 26.



FAE black
CHICAGO sand denim

You'll find **Chef Jacket Louis**
on page 33.

MILOU

White
Art. 10.5012
XXS-XXL (White & Black)
XXS-3XL (Black Denim)



COLOURS



White Black

Fabrics:
65%PE/35%CO Xtraflex



Black
Denim

Fabrics:
52%CO Fairtrade/45%PE/3%EOL

GREEN CHOICE



Take a look at the product index for images of various colours



MILOU black denim



(Bib) Aprons



All our (bib) aprons are durable enough for the hottest kitchen, but stylish enough for the front of the house. Exclusive cuts maximize movement while interchangeable collars on many models offer personalization.

UNISEX



PHOENIX

Sand Denim
Art. 30.1008
70x110cm WxL



COLOURS

- 01 White
- 02 Black
- 03 Nimbus Grey

- 04 Slate Grey
- 15 Pure Choco

Fabrics:
65%PE/35%CO

- 21 Sand Denim
- 22 Black Denim

Fabrics:
52%CO Fairtrade/45%PE/3%EOL

GREEN CHOICE



Take a look at the product index for images of various colours

ATLANTA

Nimbus Grey
Art. 30.1005
100x110cm WxL



COLOURS

- 02 Black
- 03 Nimbus Grey
- 28 Jeans Black

Fabrics:
65%PE/35%CO

- 27 Denim

Fabrics:
55%CO/45%PE



DENVER

Slate Grey
Art. 30.1033
70x110cm WxL



COLOURS

- 01 White
- 02 Black
- 03 Nimbus Grey
- 04 Slate Grey

- 06 Navy
- 15 Pure Choco
- 55 Olive Green

Fabrics:
65%PE/35%CO

- 21 Sand Denim

Fabrics:
52%CO Fairtrade/45%PE/3%EOL

GREEN CHOICE



Take a look at the product index for images of various colours

PETER

Black/White stripe
Art. 30.1070
100x110cm WxL
90x110cm WxL (b.stripe)



COLOURS



Butcher-
stripe

Fabrics:
100%CO
Only in size 90x110cm WxL

- 02 Black
- 03 Nimbus Grey
- 06 Navy

- 15 Pure Choco
- 43 Black/White Stripe
- 44 Marine Stripe

Fabrics:
65%PE/35%CO
Only in size 100x110cm WxL





ANDREAS white
SANTIAGO washed grey denim
JULIEN white
DAVOS black



DALLAS

Black Denim
Art. 30.5001
70x75cm WxL



COLOURS



Fabrics:
65%PE/35%CO



Black
Denim

Fabrics:
52%CO Fairtrade /45%PE/3%EOL

GREEN CHOICE



Take a look at the product index for images of various colours



DAKOTA

Green Canvas
Art. 30.1161
70x75cm WxL



COLOURS



Fabrics:
55%CO/45%PE



Green
Canvas



Sand
Canvas



Brown
Canvas



Blue
Canvas

Fabrics:
65%PE/35%CO



Take a look at the product index for images of various colours

DETROIT

Black
Art. 30.5009
70x85cm WxL



COLOURS



Black

Fabrics:
65%PE/35%CO



CALI

Washed Blue Denim
Art. 30.7001
70x83cm WxL



COLOURS



Washed
Blue
Denim



Washed
Grey
Denim

Fabrics:
81%CO/17%PE 2%EL Coolmax
Leather collar + straps optional



Take a look at the product index for images of various colours

SEATTLE

Heavy Black Denim
Art. 30.5005
77x83cm WxL



COLOURS



Heavy
Blue
Denim



Heavy
Black
Denim

Fabrics:
55%CO/45%PE



Black



Navy



Pure
Choco



Olivette

Fabrics:
65%PE/35%CO



Take a look at the product index for images of various colours



LAUREN

Black
Art. 30.1016
75x90cm WxL



COLOURS



Black

Fabrics:
65%PE/35%CO



Take a look at the product index for images of various colours



ERIK

Black
Art. 30.1006
80x110cm WxL



COLOURS



Black



Navy

Fabrics:
65%PE/35%CO



AUSTIN

Black
Art. 40.1034
100x100cm WxL



COLOURS



White



Black

Fabrics:
65%PE/35%CO



EDEN

Heavy Green Denim
Art. 30.1198
78x84cm WxL



COLOURS



Black

Fabrics:
65%PE/35%CO



Heavy
Black
Denim



Heavy
Green
Denim

Fabrics:
55%CO/45%PE



NEW

Davos could be combined perfectly with **Chef Jacket Andreas**. You'll find Andreas on page 18.

DAVOS

Black
Art. 30.1147
70x82cm WxL



COLOURS



Black



Patriot Blue

Fabrics:
67%PE/33%CO



Herringbone texture



Take a look at the product index for images of various colours



ANDREAS patriot blue
DAVOS patriot blue



MORGAN white
JACKSON white

Jackson could be attached to
Chef Jacket Morgan. You'll
find Morgan on page 35.

NEW



Take a look at the product index for images of various colours

JACKSON

Navy
Art. 30.1149
82x84cm WxL



COLOURS



Fabrics:
65%PE/35%CO

Jackson has its own detachable
neck straps, in this case you
are able to use Apron Jackson
separately from Chef Jacket
Morgan.



JULIEN white
SPANISH SHORT black



SPANISH SHORT

Navy
Art. 40.1181
100x50cm WxL



COLOURS



White



Black



Navy

Fabrics:
65%PE/35%CO

SPANISH ONE

Olive Green
Art. 30.9001
70x83cm WxL



COLOURS



White



Black



Navy



Olive Green



Olivette

Fabrics:
65%PE/35%CO



Sturdy Denim

Fabrics:
100%CO / No industrial laundry



Take a look at the product index for images of various colours



Pants

Stay comfortable and professional by wearing one of our jeans, featuring lightweight denim fabrics, multiple pockets, and innovative details.

UNISEX



GREEN CHOICE



CHICAGO black denim



CHICAGO

Sand Denim
Art. 20.1136
L34 W26-42
L36 W30-36



COLOURS



Fabrics:
52%CO Fairtrade/45%PE/3%EOL





OREGON

Navy
Art. 20.2001
L34 W26-42



COLOURS



Navy

Fabrics:
65%PE/35%CO Xtraflex



OREGON

Black
Art. 20.2001
L32 W26-34 (Black)
L34 W28-42 (Black)
L36 W30-36 (Black)

L34 W28-38 (Olivette)



COLOURS



Black



Olivette

Fabrics:
65%PE/35%CO Xtraflex





SYDNEY washed grey denim
SYDNEY black





SYDNEY

Washed Blue Denim
Art. 20.1178
L32 W26-34
L34 W30-40



COLOURS



Washed
Blue Denim

Fabrics:
81%CO/17%PE/2%EL Coolmax



SYDNEY

Black
Art. 20.1178
L32 W26-34
L34 W28-42



COLOURS



Black

Fabrics:
65%PE/35%CO Xtraflex



SYDNEY

Washed Grey Denim
Art. 20.1178
L32 W26-34
L34 W30-40



COLOURS



Washed
Grey
Denim

Fabrics:
81%CO/17%PE/2%EL Coolmax





Service Wear

Our trendy, comfortable and high quality service clothes are especially created for staff within the catering industry. Besides the cool design, the (bib) aprons for serving staff have multiple functionalities such as pockets for cocktail napkins, a speedopener and change.

UNISEX



GREEN CHOICE

JESSE

Black
Art. 60.1131
XXS-6XL (White/Black)
XXS-4XL (Patriot Blue)



COLOURS



White Black

Fabrics:
48%CO/48%PE/4%EOL
55%CO/45% 2nd Life Polyester



Patriot Blue

Fabrics:
75%CO/25%PE
55%CO/45% 2nd Life Polyester



Polo Piqué stretch
on the back

Take a look at the product index for images of various colours

GREEN CHOICE



Polo Piqué stretch
on the back



Take a look at the product index for images of various colours

LON

Patriot Blue
Art. 60.2011
XXS-6XL



COLOURS



White Black

Fabrics:
48%CO/48%PE/4%EOL
55%CO/45% 2nd Life Polyester



Patriot Blue

Fabrics:
75%CO/25%PE
55%CO/45% 2nd Life Polyester

DENNIS

White
Art. 60.1036
XS-6XL (White)
XS-4XL (Black)



COLOURS



White Black

Fabrics:
48%CO/48%PE/4%EOL



Take a look at the product index for images of various colours

NIKKI

Black
Art. 60.1012
XXS-4XL



COLOURS



White Black

Fabrics:
48%CO/48%PE/4%EOL



Take a look at the product index for images of various colours

MARINA

Washed Grey Denim
Art. 61.1037
XS-XL



COLOURS



Washed Blue Denim Washed Grey Denim

Fabrics:
81%CO/17%PE/2%EL Coolmax

Optional:
Bag Charly (shown in picture)



CHARLY

Washed Grey Denim
Art. 70.1097
One Size



COLOURS



Washed Blue Denim Washed Grey Denim

Fabrics:
81%CO/17%PE/2%EL Coolmax



MARINA washed blue denim



Take a look at the product index for images of various colours



SANTIAGO

Washed Blue Denim
Art. 30.7003
70x92cm WxL



COLOURS



Fabrics:
81%CO/17%PE/2%EL Coolmax



Take a look at the product index for images of various colours



MIAMI

Heavy Blue Denim
Art. 40.1159
70x45cm WxL



COLOURS



Black

Fabrics:
65%CO/35%PE



Heavy Blue Denim
Heavy Black Denim

Fabrics:
55%CO/45%PE



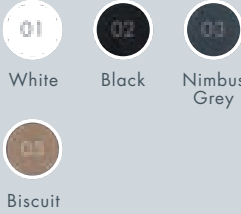
Take a look at the product index for images of various colours

BISTRO

Nimbus Grey
Art. 40.1009
120x41cm WxL



COLOURS



Fabrics:
65%PE/35%CO



JESSE white
JAMES black denim



JAMES

Black Denim
Art. 62.1039
XS-4XL



COLOURS



Black
Denim

Fabrics:
52%CO Fairtrade /45%PE/3%EOL

GREEN CHOICE



JACKY

Black Denim
Art. 62.1089
XS-4XL



COLOURS



Black
Denim

Fabrics:
52%CO Fairtrade /45%PE/3%EOL

GREEN CHOICE

GREEN CHOICE



MIKA

Black
Art. 93.1048
S-XXL



COLOURS



Black

Fabrics:
100% recycled PE Softshell



MIKA black



Hats & Other

We combine leisure and workwear for ultimate comfort, both inside and outside the kitchen environment. These items are the finishing touch to complete your daily outfit.

UNISEX



NEW



NOAH

Heather Grey
Art. 94.1187
S-XXL



COLOURS



Heather
Grey

Fabrics:
55%CO/45%PE



DANI

Heather Grey
Art. 94.1188
S-XXL



COLOURS



Heather
Grey

Fabrics:
55%CO/45%PE



NOAH heather grey
OREGON black

NEW



MAURO

Bronze
Art. 72.1197
XS-S-M-L-XL



COLOURS



Bronze

Fabrics:
100% leather / stainless steel

HUGO

Oak
Art. 72.1196
XS-S-M-L-XL



COLOURS



Oak

Fabrics:
100% leather / stainless steel



MAURO bronze

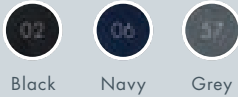
NEW

JAKE

Navy
Art. 51.1190
One Size



COLOURS



Fabrics:
97%PE/3%EA



Take a look at the product index for images of various colours

JOHN

Grey
Art. 51.1191
One Size



COLOURS



Fabrics:
83%PAC/15%WO/2%EA

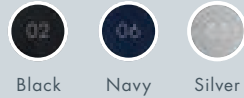


JEFF

Black
Art. 51.1192
One Size



COLOURS



Fabrics:
100% CO



Take a look at the product index for images of various colours



FEZ

Art. 50.1056
One Size



COLOURS



White



Black



Navy



Pure Choco

Fabrics:
65%PE/35%CO

LADIES FEZ

Art. 50.1092
One Size



COLOURS



White



Black

Fabrics:
65%PE/35%CO



BARET

White
Art. 50.1035
One Size



COLOURS



White



Black

Fabrics:
65%PE/35%CO



H



KITCHEN TOWEL

Grey/White
Art. 71.1040
50x80cm WxL



COLOURS



Grey/
White

Fabrics:
50%LI/50%CO



We care about the planet!

Le Nouveau Chef is not only known for its high-quality and innovative designs, but is also leading in creating chef- and service wear made of sustainable fabrics.

Products made of these fabrics are labelled with a Green Choice sign. By buying one of our Green Choice products, you invest in a high-quality piece of garment which is mainly produced by respecting the natural resources of our planet.

To highlight our contribution to a sustainable world, for every sold TENCEL® product we plant a tree, in cooperation with Original Beans. Original Beans

is a certified organic chocolate brand. They combine their passion for high-quality products with sustainability by conserving endangered species in their habitat-remote rainforests.

Accompanied with your TENCEL® chef's jacket, you will find a small leaflet. The code on the leaflet enables you to find out where your tree is planted. This means when buying a chef's jacket made of TENCEL® you are not only wearing a high-quality and comfortable chef's jacket, but you are also giving something back to our planet.

These ingredients are used for our Green Choice products.

TENCEL

TENCEL® is a sustainable produced fibre made of Eucalyptus wood which is extracted from responsible managed forests with official FSC certification. The solvent used during the production of TENCEL® is almost 100% recycled. At the same time, a minimum amount of water is used during the process (compared to cotton-only 1%). For TENCEL®, there is a process developed of chlorine-free bleaching and is therefore completely biodegradable. TENCEL® received the 'European award for

Environment' from the European Union for their unique production process. Besides sustainability, the benefits of TENCEL® are particularly well-suited for chef's wear: high moisture absorption and reduced bacterial growth.

FAIRTRADE

The Fairtrade standard for textile guarantees a fair price for farmers and environmentally friendly cotton cultivation. Fairtrade products must meet strict standards to give farmers price guarantees and to

ensure good working conditions for employees. The Fairtrade programme does not only focus on fair trade, but it also has strict rules to protect environment and nature.

ORGANIC (BIO) COTTON

Organic (Bio-) Cotton is produced and certified to organic agricultural standards. The production sustains the health of soils, ecosystems and people by using natural processes rather than artificial inputs. Organic farming does not allow the

use of toxic chemicals, like pesticides, or genetically modified organisms.

RECYCLED PET POLYESTER

With this method plastic bottles, made from PET, are recycled into Polyester. This is a source of plastic that would otherwise go to landfill and would create pollution. During this process, air, water and soil will be less contaminated compared to the use of non-recycled Polyester. **H**



CHEF JACKETS MEN



ALAIN
10.2006.001
White - Page.14

ALAIN
10.2006.002
Black - Page.14

ALAIN
10.2006.040
Patriot Blue - Page.14

ALAIN
10.2006.056
Pearl Grey - Page.14



ALAIN
10.2006.069
Olivette - Page.14

ANDREAS
10.2201.001
White - Page.18

ANDREAS
10.2201.002
Black - Page.18

ANDREAS
10.2201.040
Patriot Blue - Page.18



ANGELO
10.2002.001
White - Page.10

ANGELO
10.2002.002
Black - Page.10

ANGELO
10.2002.040
Patriot Blue - Page.10

CHAVI
10.1200.072
Sturdy Denim - Page.31



DAVE
10.1184.001
White - Page.17

DAVE
10.1184.002
Black - Page.17

DAVE
10.1184.006
Navy - Page.17

DAVE
10.1184.069
Olivette - Page.17



FABIAN
10.2003.001
White - Page.15

FABIAN
10.2003.002
Black - Page.15

FALCO
10.1250.001
White - Page.9

FERRE
10.8001.001
White - Page.26



FERRE
10.8001.002
Black - Page.26

FERRE
10.8001.040
Patriot Blue - Page.26

FERRE
10.8001.056
Pearl Grey - Page.26

GUSTO
10.2004.001
White - Page.12



CHEF JACKETS MEN



GUSTO
10.2004.002
Black - Page.12



JORDY
10.8002.001
White - Page.29



JORDY
10.8002.002
Black - Page.29



JULIEN
10.8003.001
White - Page.22



JULIEN
10.8003.002
Black - Page.22



JULIEN
10.8003.040
Patriot Blue - Page.22



JULIEN
10.8003.056
Pearl Grey - Page.22



JULIEN
10.8003.069
Olivette - Page.22



MORGAN
10.2501.001
White - Page.35



MORGAN
10.2501.002
Black - Page.35



MORGAN
10.2501.006
Navy - Page.35



NERO
10.6001.001
White - Page.30



NERO
10.6001.002
Black - Page.30



PITCHER
10.9003.001
White - Page.25



PITCHER
10.9003.002
Black - Page.25



TEXAS
10.5003.001
White - Page.32



LOUIS
10.5002.001
White - Page.33



LOUIS
10.5002.002
Black - Page.33



LOUIS
10.5002.022
Black Denim - Page.33



YVES
10.2102.001
White - Page.24



YVES
10.2102.002
Black - Page.24



CHEF JACKETS WOMEN



ELISE
10.2016.001
White - Page.40



ELISE
10.2016.002
Black - Page.40



ELISE
10.2016.040
Patriot Blue - Page.40



ELISE
10.2016.056
Pearl Grey - Page.40



JOLIE
10.8013.069
Olivette - Page.41



LYNN
10.1154.001
White - Page.42



LYNN
10.1154.002
Black - Page.42



LYNN
10.1154.006
Navy - Page.42



ESMEE
10.2013.001
White - Page.38



ESMEE
10.2013.002
Black - Page.38



FAE
10.8011.001
White - Page.46



FAE
10.8011.002
Black - Page.46



LYNN
10.1154.069
Olivette - Page.42



SOPHIE
10.2112.001
White - Page.44



SOPHIE
10.2112.001
Black - Page.44



MILOU
10.5012.001
White - Page.48



FAE
10.8011.040
Patriot Blue - Page.46



JOLIE
10.8013.001
White - Page.41



JOLIE
10.8013.002
Black - Page.41



JOLIE
10.8013.040
Patriot Blue - Page.41



MILOU
10.5012.002
Black - Page.48



MILOU
10.5012.022
Black Denim - Page.48



VENUS
10.2014.001
White - Page.39



VENUS
10.2014.002
Black - Page.39





VENUS
10.2014.040
Patriot Blue - Page.39



DAVOS
30.1147
Page.62



DENVER
30.1033
Page.53

(BIB) APRONS



ATLANTA
30.1005
Page.52



AUSTIN
40.1034
Page.61



CALI
30.7001
Page.58



DETROIT
30.5009
Page.57



ERIK
30.1006
Page.60



EDEN
30.1198
Page.61



DAKOTA
30.1161
Page.57



DALLAS
30.5001
Page.56



JACKSON
30.1149
Page.65



LAUREN
30.1016
Page.60



PETER
30.1070
Page.53





PHOENIX
30.1008
Page.52



SEATTLE
30.5005
Page.59



SPANISH ONE
30.9001
Page.67



SPANISH SHORT
40.1181
Page.67



PANTS



CHICAGO
20.1136
Page.71



OREGON
20.2001
Page.72/73



SYDNEY
20.1178
Page.76/77



SERVICE WEAR



BISTRO
40.1009
Page.87



DENNIS
60.1036.001
White - Page.82



DENNIS
60.1036.002
Black - Page.82



JACKY
62.1089.022
Black Denim - Page.89



JAMES
62.1039.022
Black Denim - Page.89



JESSE
60.1131.001
White - Page.80



JESSE
60.1131.002
Black - Page.80



JESSE
60.1131.040
Patriot Blue - Page.80



LON
60.2011.001
White - Page.81



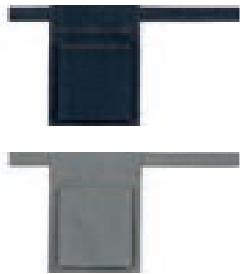
LON
60.2011.002
Black - Page.81



LON
60.2011.040
Patriot Blue - Page.81



SERVICE WEAR



CHARLY
70.1097
Pag. 84



MARINA
61.1037.053
Washed Blue Denim - Page.84



MARINA
61.1037.054
Washed Grey Denim - Page.84



MIKA
93.1048
Black - Page.90



MIAMI
40.1159
Page.87



NIKKI
60.1012.001
White - Page.83



NIKKI
60.1012.002
Black - Page.83



SANTIAGO
30.7003.053
Washed Blue Denim - Page.86



SANTIAGO
30.7003.054
Washed Grey Denim - Page.86



HATS & OTHER



BARET
50.1035
Page.100



FEZ
50.1056
Page.100



LADIES FEZ
50.1092
Page.100



HUGO
72.1197
Page.96



JAKE
51.1190
Page.98



JEFF
51.1192
Page.99



JOHN
51.1191
Page.99



KITCHEN TOWEL
71.1040
Page.101



MAURO
72.1196
Page.96



NOAH
94.1187
Page.94



DANI
94.1188
Page.94



Proud partner of a.o.

